

Original article

Oral acute and sub-acute toxic effects of hydroalcoholic Terminalia chebula Retz and Achillea wilhelmsii extracts in BALB/c mice

Mahnaz Jafari¹, Kourosh Manouchehri Naeini^{1,*}, Zahra Lorigooini¹, Rasool Namjo²

¹Medical Plants Research Center, Basic Health Sciences Institute, Shahrekord University of Medical Sciences, Shahrekord, Iran.
²Department of Pathology, School of Veterinary Medicine, Islamic Azad University, Shahrekord, Iran

Received 8 of June, 2019 Accepted 22 of July, 2019

© Author(s) 2019. This article is published with open access by China Medical University

Keywords:
Achillea wilhelmsii
Acute toxicity;
Animal Model;
Sub-acute toxicity;
Terminalia chebula

ABSTRACT

Background: This study examined the acute and sub-acute toxic effects of Terminalia chebula and Achillea wilhelmsii extracts on the murine model.

Methods: In both phases, mice were assigned to intervention and control groups. At the end of study, the liver, kidney, and heart tissues were collected for histopathological studies.

Results: In the acute phase, LD50 (95% CI) of Achillea wilhelmsii H₂O extract was 5.14 (3.87-6.71) mg/kg. In the sub-acute phase, LD50 (95% CI) of Terminalia chebula extract was 2754.436 (2438-3114) mg/kg. The highest dose of Terminalia chebula extract induced few histopathological changes.

Conclusion: It will be useful to gain information on the minimum lethal doses of Terminalia chebula and Achillea wilhelmsii to adopt safe doses of the two plants.

1. Introduction

Nowadays, due to the increasing use of medicinal herbs to treat various diseases, the study of the therapeutic and negative effects of these drugs has attracted the attention of researchers. However, most pharmaceutical studies have mainly focused on the beneficial properties of the plants and their safe and toxic doses. So to ensure the safety of herbal drugs, the study of the long-term and short-term toxic effects of these drugs is essential [1, 2]. Acute or lethal toxicity refers to a chemical compound's ability to lead to death relatively soon after being orally ingested, or after being exposed, e.g., as a gas in the air, for four hours. The period of acute and acute toxicity has conventionally been expressed in minutes, hours, and weeks (up to two weeks), and has rarely been defined as longer than the mentioned periods. Sometimes the LD50 (median lethal dose) is referred to as the mean lethal dose. The LD50 of a certain compound is the dose of that compound that kills 50% of the members of a tested population (e.g. laboratory rats or mice) after specified test duration through the already described methods. The purpose of an acute toxicity study is to obtain information on biological and chemical activity and mechanisms of action, which is the basis of toxicology and chemical classification. In most studies that have been conducted on toxicity rate of medicinal agents in laboratory animals, test agents are inoculated orally. Studies in this area are important with respect to drugs, foods, and accidental poisoning [3, 4]. LD50 values can be very small or vice versa, comparable to other toxicity scales. Toxicity measurement methods are numerous, most important of which are Gosselin scale and Hodge-Stern scale [5]. As no study has yet been conducted on the sub-acute and acute toxicity of Terminalia chebula Retz and Achillea wilhelmsii, the study was aimed to investigate these aspects of the two extracts. Terminalia chebula is from the Combretaceae family and is a herbaceous, perennial, and juicy plant natively occurring in India and Southeast Asia. Due to the presence of secondary metabolites, this plant has been considered a herbal drug. The fresh and dry

* Corresponding author. Shahrekord University of Medical Sciences, Shahrekord, Iran.
E-mail address: k_manouchehri@yahoo.com (K. M. Naeini).

fruit of this plant has a lot of phenolic compounds and strong antioxidant properties [6, 7]. The antibacterial, antifungal, immunomodulatory activities, antiviral, antioxidant, anti-cancer, antimalarial, and anti-diabetic properties were demonstrated in different studies [8-18]. *Yarrowia* (belonging to the Asteraceae family, has been applied in Iranian and other traditional medicine to treat some diseases.

The species of the *Achillea* genus have a considerable amount of essential oil. *A. wilhelmsii* has secondary metabolites including terpenes, flavonoids, alkaloids, tannin, and lignin [19, 20]. Based on studies, the anti-hypertensive, anti-inflammatory, antibacterial, anticancer, and antioxidant effects of *A. wilhelmsii* have been proven. In addition, this plant can lower cholesterol and glucose levels [21-26].

and Schmidt in 1996. The main point of this protocol is discoloration of absorbance at 517 nm due to the influence of the antioxidant compound. The inhibition of absorbance at 517 nm was plotted to obtain antioxidant concentration. In this test, butylated hydroxytoluene (BHT) was used as standard [14, 29].

25. Animals used in this study, the animals that used were male BALB/c mice (25-30 g, aged 7-8 weeks), which were kept at 12/12-h light/dark cycle under (22 ± 2)°C. The animals were transferred to the experiment environment one week before the tests. This study protocol was confirmed by Shahrekord University of Medical Sciences Ethics Committee (ethics code: IR.SKUMS.REC1394.196)

2. Materials and methods

2.1. Collecting plant samples and extraction

The plants were purchased from medicinal plant stores and identified as the plants of interest by botanists, and two voucher specimens (no. 27 and 304) were deposited for *Achillea wilhelmsii* respectively, at the Herbarium of Shahrekord University of Medical Sciences Chaharmahal va Bakhtiari Province. In order to prepare extracts, maceration was done in 70% ethanol during 72 hours and the mixture was refined using Buchner funnel and Whatman number 1 paper. The resulting extract was concentrated in vacuum in a Rotary evaporator at 35°C. The extract was then incubated at 40°C to dry and ultimately, the dried extract was left under -20°C temperature till it was used [27].

2.2. Determination of Total Phenolic Content

The total phenolic content was measured by the Folin-Ciocalteu colorimetric method. First, Gallic acid at different concentrations was prepared and the standard curve was plotted by reading the DEVRUEDQFH DW QP 7KHQ / FRPELQHG ZLWK /)ROLQ & LRFDO WHP SHUDWXUH IRU RQH PLQXWH \$ I have mentioned carbonate was introduced and the resulting mixture left at room temperature for 2 hours. The optical absorbance of the samples was recorded at 765 nm spectrophotometrically and the data were reported in mg gallic acid equivalent (GAE)/g dry weight of the extracts [28].

2.3. Measuring total flavonoid content

The total flavonoid content was measured spectrophotometrically based on flavonoid-aluminium complexation, described by Lamaison and Carnat. Briefly, 1 mL extract solutions were combined with 1 mL 2% ethanolic AlCl₃ and 3 mL 5% potassium acetate. The mixture was then left at room temperature for 15 minutes, and finally, the optical absorbance of the mixture was spectrophotometrically read at 430 nm, and the results were presented as mg rutin equivalent/g dry weight of the plant extracts [28].

2.4. Measuring antioxidant activity

The antioxidant activity was measured by the protocol of Kirby

2.6. Acute toxicity test

To conduct this step of research, the method described by Lorke et al was used [30]. This step of the research was performed in two phases: First, the mice were assigned to 10 groups of 5 each randomly. For each of the extracts, one group was considered as controls and four groups as test groups. Then, in the control group, 0.5 mL of sterile normal saline was administered orally. In order to prepare extracts, maceration was done in 70% ethanol during 72 hours and the mixture was refined using Buchner funnel and Whatman number 1 paper. The resulting extract was concentrated in vacuum in a Rotary evaporator at 35°C. The extract was then incubated at 40°C to dry and ultimately, the dried extract was left under -20°C temperature till it was used [27].

At this stage, all administrations were performed as a single oral dose. Then, the signs of toxicity were examined in mice (behaviour, respiratory pattern, cardiovascular symptoms, motor activity, reflex, and fur and skin changes) and mortality at 1, 2, 4, 8, 12, 24, 48, and 72 h intervals. Because there was no mortality at the intervals, the second stage of the experiment started. In this stage, the mice were assigned to 8 groups of 5 each (two control groups and three case groups for each extract). Then, in the control group, 0.5ml of sterile normal saline was administered by the same method as the mice in the first stage. In three case groups were separately given 1250, 2500, and 5000 mg/kg of each of extracts and the mice were examined for toxicity signs and mortality at the above-mentioned intervals [3].

2.7. Subacute toxicity test

Mice were randomly assigned to 14 groups of 5 each (one group considered to be control and 6 groups to be cases treated with each studied extract separately). Then, the mice in the control group orally received 0.5ml of sterile normal saline for 14 days, and the mice in case groups were separately treated with 156.25, 312.5, 625, 1250, 2500, and 5000 mg/kg of extracts of *A. wilhelmsii* and *T. chebula*. The mice were monitored for toxicity signs and mortality on a daily basis for 30 days [31-33].

2.8. Histopathological investigation

At the completion of the study, the mice were anaesthetized with chloroform and pieces of liver, kidney, and heart were removed so that they could be histopathologically examined. After the tissues were placed in 10% formalin solution and paraffin blocks were prepared, 5 µm sections were prepared from the tissues. To conduct histopathological investigations, hematoxylin-eosin staining was conducted on the sections and the lams were microscopically

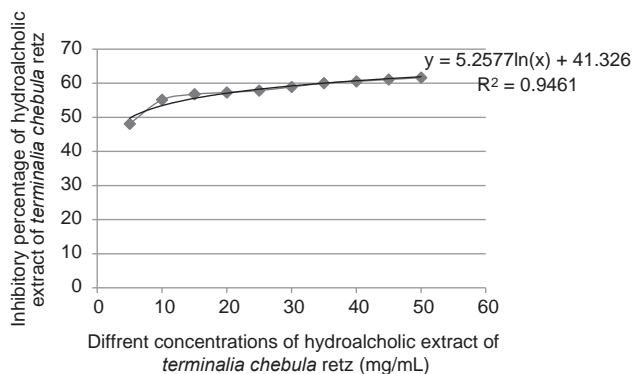


Fig. 1- Percentage of DPPH free radicals inhibition by Terminalia chebula

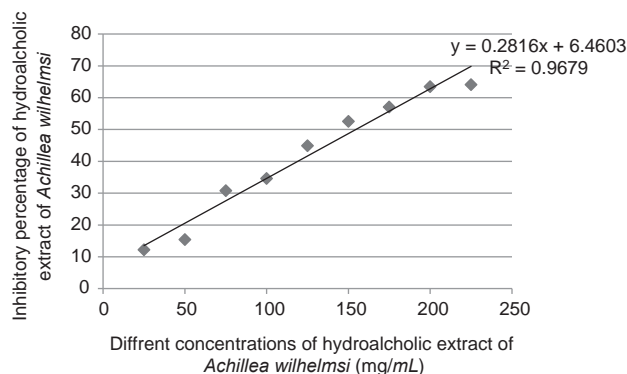


Fig. 2 - Percentage of DPPH free radicals inhibition by Achillea wilhelmsii

examined for possible lesions. To save time, the aforementioned measures were performed in control mice and mice receiving doses of 2500 and 5000 mg/kg of the extracts. If there were tissue changes in this stage, histopathological examinations were also performed in mice receiving lower doses of extracts [34].

2.9. Statistical analysis

Data analysis was conducted by the SPSS version 20 by Probit regression and P less than 0.05 was assumed significance level.

3. Results

3.1. Total phenolic content, flavonoid content and antioxidant activity of T. chebula and A. wilhelmsii

The phenolic content was measured according to the standard gallic acid curve plotted by the $Y = 0.1098X - 2.579$ formula. Accordingly, the total phenolic contents of the chebula and A. wilhelmsii extracts were calculated at 276.66 ± 1.45 mg GAE/g and 55.07 ± 0.295 mg GAE/g dry extract, respectively. To calculate the total flavonoid content, a standard rutin curve (formula of $Y = 0.235X - 8.970$) was used. On this basis, the total flavonoid content of T. chebula and A. wilhelmsii extract extracts was 39.99 ± 0.192 mg and 39.14 ± 0.100 mg rutin equivalent/g dry extract, respectively. The antioxidant activities of the extracts showed that the IC50 of chebula was 1.56 mg/ml (Fig. 1) and that of A. wilhelmsii was 1.56 mg/ml (Fig. 2). The antioxidant capacity of BHT as the standard material was also calculated as 7.14 ± 0.07 mg/ml. The results showed that the antioxidant capacity of chebula was 6.85 times more than BHT and this capacity of A. wilhelmsii was 0.21 time more than BHT.

3.2. Acute toxicity results of the extracts of T. chebula and A. wilhelmsii

Acute toxicity of T. chebula and A. wilhelmsii extracts in mice with doses of 10, 156.25, 312.5 and 625 mg/kg no mortality was observed. Therefore, in the second stage, higher concentrations, i.e., 1250, 2500, and 5000 mg/kg of the extracts were used. In the

animals receiving the extract at these doses, no death was also observed. Therefore, in acute toxicity phase LD50 for both extracts was over 5000 mg/kg.

3.3. Sub-acute toxicity results of the T. chebula and A. wilhelmsii extracts

The mortality rate of the studied animals was investigated within 14 days, which was followed up until the 30th day. At this stage, the animals received 156.25, 312.5, 625, 1250, 2500, and 5000 mg/kg doses by gavage. In sub-acute phase of the study, LD50 values calculated based on the dose-response curve using Probit regression analysis exhibited that the low LD50 of T. chebula's LD50 was 156.25 mg/kg and A. wilhelmsii's safe dose was 156.25 mg/kg [35].

3.4. Results of histopathological investigations

Microscopic examinations showed pathological hepatic, cardiac and renal changes in the mice receiving 5000 mg/kg hydroalcoholic T. chebula extract. In liver tissue sections, hepatic central venous dilatation with mild hyperemia and the accumulation of acute inflammatory cells (neutrophils) were observed as focal masses that were associated with the death of liver cells (Fig. 3-A). In the kidney, atrophy and wrinkling of glomeruli (Arrow) and degeneration of renal tubules were observed (Fig. 3-B). The heart tissue sections of the subjects showed cytoplasmic deformation of striated myocytes (Arrow) along with interstitial edema (Fig. 3-C). The animals received A. wilhelmsii extract, at 5000 mg/kg, showed changes in the liver, including regional necrosis around the central hepatic vein (Region 3-Arrow) and the hyperemia of the central hepatic vein (Asterisk), which is exclusively vulnerable to ischemic injury were observed. (Fig. 3-D) However, no clear histopathological changes were observed in kidney and heart tissue sections of mice that received the hydroalcoholic extract of wilhelmsii [35].

4. Discussion

Given the growing application of medicinal plants to treat dis-

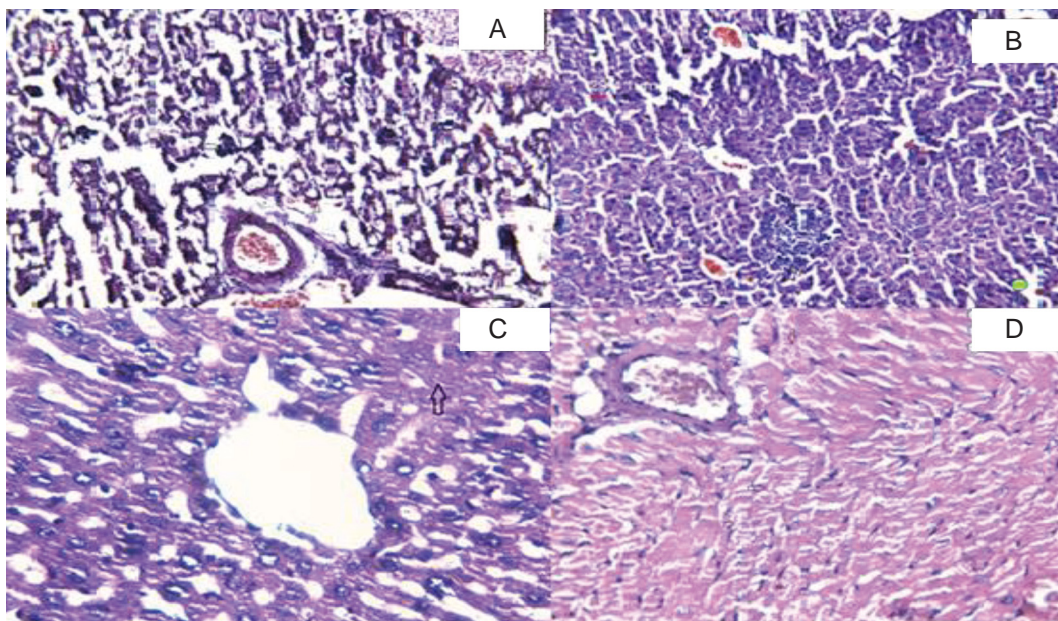


Fig. 3- Pathologic changes in the liver (A), Kidney(B) and Heart(C) tissues in Terminalia chebula treated-group and the liver tissue(D) of Achillea wilhelmsii treated group. (H & E × 100)

eases and numerous pharmacological researches, the toxic properties of herbal drugs, along with their therapeutic properties need to be investigated; however, in some studies, the toxic effects of these plants have been studied. This study was therefore aimed at investigating the acute and sub-acute toxic effects of certain lesions developed in the liver tissue, which can be due to *A. wilhelmsii* extracts. In this study, the phenolic and flavonoid contents and antioxidant activity of the studied extracts were measured. According to the results, a significant correlation was observed between the antioxidant properties and total phenolic contents of the extracts of *T. chebula* and *A. wilhelmsii* hydroalcoholic extract. *T. chebula* exhibited more potent antioxidant capacity, compared with *A. wilhelmsii* due to its high total phenolic content (6.03 vs. 0.21 BHT). Basically, antioxidant properties increase with an increase in total phenolic content. Phenolic compounds, with high molecular weight, have a significant potential for scavenging free radicals, which depends on the number of aromatic nuclei and the nature of the hydroxyl groups influencing them. In this study, the extract of *T. chebula* was shown to be more antioxidant due to its comparatively more phenolic compounds. DPPH radicals are free, stable, organic, and nitrogenous radicals that are widely used for scavenging free radicals [36, 37]. The study of Ali Mirzaei et al. reported the antioxidant capacity and total phenolic content of *A. wilhelmsii* were low, and the study of Tupet al. confirmed the high amount of total phenolic compounds and the high antioxidant capacity of *T. chebula* [38, 39]. In this study, the minimum lethal doses (LD50 values) of hydroalcoholic extracts of *T. chebula* and *A. wilhelmsii* in BALB/c mice were determined in the acute phase, no mortality occurred among the animal subjects. However, in the sub-acute toxicity phase, mortality was observed in mice receiving 2500 and 5000 mg/kg of *T. chebula* extract. In this regard, the minimum lethal dose of hydroalcoholic extracts of *T. chebula* was determined to be 2754.43 mg/kg. However, in the mice receiving the *A. wilhelmsii* extract, only one case of death was seen at

5000 mg/kg. Therefore, the minimum lethal dose of *A. wilhelmsii* is 5000 mg/kg.

Conclusion
 In the acute toxicity phase, the administration of 5000 mg/kg of hydroalcoholic *T. chebula* and hydroalcoholic *A. wilhelmsii* extracts is safe. Regarding sub-acute toxicity, *T. chebula* extract at 2754.436 mg/kg and *A. wilhelmsii* extract at a dose of at most 5000 mg/kg is safe. Therefore, in future studies, safe doses can be selected by investigating the minimum lethal doses (LD50 values) of hydroalcoholic extracts of *A. wilhelmsii* and *T. chebula*.

Acknowledgments
 The authors acknowledge Shahrekord University of Medical Sciences Research and Technology Deputy for their support (grant no: 2263).

Conflicts of interest statement

The authors wish to disclose no conflicts of interest.

Open Access This article is distributed under terms of the Creative Commons Attribution License which permits any use, distribution and reproduction in any medium, provided original author(s) and source are credited.

REFERENCES

- [1] Bello I, Bakkouri AS, Tabana YM, Al-Hindi B, Al-Mansoub MA, Roziathanim M et al. Acute and sub-acute toxicity evaluation of the methanolic extract of *Alstonia scholaris* stem bark. *Med Sci*. 2016; 4(1): 4.
- [2] Dehghan M, Asgharian Sh, Khalesi E, Ahmadi A, Lorigooini Z. Comparative study of the effect of *Thymus daenensis* gel 5% and diclofenac in patients with knee osteoarthritis. *BioMedicine*. 2019; 9(2): 9.
- [3] Onwusonye JC, Uwakwe AA, Iwuanyanwu P, Iheagwam U. Oral acute toxicity (LD₅₀) study of methanol extract of *Annona senegalensis* leaf in albino mice. *Sky J Biochem Res*. 2014; 3(5): 46-8.
- [4] Randhawa MA. Calculation of LD50 values from the method of Miller and Tainter, 1944. *J Ayub Med Coll Abbottabad*. 2009; 21(3): 184-5.
- [5] Walum E. Acute oral toxicity. *Environ Health Perspect*. 1998; 106(2): 497-503.
- [6] Bag A, Bhattacharyya SK, Chattopadhyay RR. The development of *Terminalia chebula* Retz (Combretaceae) in clinical research. *Asian Pac J*. 2013; 3(3): 244-52.
- [7] Rathinamoorthy R, Thilagavathi G. *Terminalia chebula*-review on pharmacological and biochemical studies. *Int J PharmTech Res*. 2014; 6(1): 97-116.
- [8] Malekzadeh F, Ehsanifara H, Shahamat M, Levinb M, Colwell RR. Antibacterial activity of black myrobalan (*Terminalia chebula* Retz) against *Helicobacter pylori*. *Int J Antimicrob Agents*. 2001; 18(1): 85-8.
- [9] Shinde SL, More SM, Junne SB, Wadje SS. The antifungal activity of five *Terminalia* species checked by paper disk method. *Int J Pharma Res Dev*. 2011; 3: 36-40.
- [10] Sohni YR, Bhatt RM. Activity of a crude extract formulation in experimental hepatic amoebiasis and in immunomodulation studies. *J Ethnopharmacol*. 1996; 54(3): 119-24.
- [11] Sahar EL, Meshelhy R, Tomoco IK, Shigetoshi K, Hattori M, Tsuneo N. Inhibitory effects of egyptian folk medicines on human immunodeficiency virus (HIV) reverse transcriptase. *Chem. Pharm Bull*. 1995; 43(4): 641-8.
- [12] Hua-Yew Ch, Ta-Chen L, Kuo-Hua Y, Chien-Min Y, Chun-Ching L. Antioxidant and free radical scavenging activities of *Terminalia chebula*. *Biol Pharm Bull*. 2003; 26(9): 1331-5.
- [13] Arora S, Kaur K, Kaur S. Indian medicinal plants as a reservoir of protective phytochemicals. *Teratog Carcinog Mutagen*. 2003; 23(1): 295-300.
- [14] Reddy DB, Reddy TCM, JyotsnaG, Sharan S, Priya N, Lakshmpathi V, et al. Chebulagic acid, a COX-LOX dual inhibitor isolated from the fruits of *Terminalia chebula* Retz, induces apoptosis in COLO-205 cell line. *J Ethnopharmacol*. 2009; 124(3): 506-12.
- [15] Ponnusankar S, Pandit S, Babu R, Bandyopadhyay A, Mukherjee PK. Cytochrome P450 inhibitory potential of *Triphala A Rasayana* from Ayurveda. *J Ethnopharmacol*. 2011; 133(1): 120-5.
- [16] Pinmai K, Hiriote W, Soonthornchareonnon N, Jongsakul K, Sireer atawong S, Tor-Udom S. In vitro and in vivo antiplasmodial activity and cytotoxicity of water extracts of *Phyllanthus emblica*, *Terminalia chebula*, and *Terminalia bellerica*. *J Med Assoc Thai*. 2011; 93(12): 120.
- [17] Rao NK, Nammi S. Antidiabetic and renoprotective effects of the chloroform extract of *Terminalia chebula* Retz seeds in streptozotocin-induced diabetic rats. *BMC Complement Altern Med*. 2006; 6(1): 17.
- [18] Saleem A, Husheem M, Harkonen P, Pihlaja K. Inhibition of cancer cell growth by crude extract and the phenolic fraction of *Terminalia chebula* retz fruit. *Food chem*. 2002; 81(3): 327-36.
- [19] Motavalizadehkakhky A, Shafaghat A, Zamani HA, Akhlaghi H, Mohammadhosseini M, Mehrzad J, et al. Compositions and the in vitro antimicrobial activities of the essential oils and extracts of two *Achillea* species from Iran. *J Med Plants Res*. 2013; 7(19): 1280-92.
- [20] Alfatemi SMH, SharifiRad J, SharifiRad M, Mohsenzadeh S, Jaime A. Teixeira da Silva Chemical composition, antioxidant activity and in vitro antibacterial activity of *Achillea wilhelmsii* C. Koch essential oil on methicillin-susceptible and methicillin-resistant *Staphylococcus aureus* spp. *3 Biotech*. 2015; 5(1): 39-44.
- [21] Niazmand S, Esparham M, Rezaee SA, Harandizadeh F. Hypotensive effect of *Achillea wilhelmsii* aqueous-ethanolic extract in rabbit. *Avicenna J Phytomed*. 2011; 1(1): 51-6.
- [22] Dhara A, Suba V, Sen T, Pal S, Chaudhuri AK. Preliminary studies on the anti-inflammatory and analgesic activity of the methanolic fraction of the root extract of *Tragia involucrata* Linn. *J Ethnopharmacol*. 2000; 72(1): 265-8.
- [23] Amjad L, Mohammadi-Sichani M. Potential activity of *Achillea wilhelmsii* leaves on bacteria. *Int J Biosci Biochem Bioinforma*. 2011; 1(3): 216.
- [24] Ahmadi-Jouibari T, Nikbakht MR, Mansouri K, Majnooni MB. Cytotoxic effects of the essential oil from *Achillea wilhelmsii* C. Koch. *J Rep Pharma Sci*. 2013; 2(2): 98-102.
- [25] Hosseini M, Harandizadeh F, Niazmand S, Soukhtanloo M, Mahmoudabady M. Antioxidant effect of *Achillea wilhelmsii* extract on pentylenetetrazole (seizure model)-induced oxidative brain damage in wistar rats. *J Physiol Pharmacol*. 2013; 57(4): 418-24.
- [26] Khazneh E, Hribova P, Hosek J, Suchy P, Kollar P, Prazanova G, et al. The Chemical Composition of *Achillea wilhelmsii* C. Koch and Its Desirable Effects on Hyperglycemia, Inflammatory Mediators and Hypercholesterolemia as Risk Factors for Cardiometabolic Disease. *Molecules*. 2016; 21(4): 404.
- [27] Rabbani M, Sajjadi S, Jalali A. Hydroalcohol extract and fractions of *Stachys lavandulifolia* Vahl: effects on spontaneous motor activity and elevated plus-maze behaviour. *Phytother Res*. 2005; 19(10): 854-8.
- [28] Djeridane A, Yousfi M, Nadjemi B, Boutassouna D, Stocker P, Vidal

- N. Antioxidant activity of some Algerian medicinal plants extracts containing phenolic compounds. *Food Chem.* 2006; 97(4): 654-60.
- [29] Karimi G, Tayebi N, Housainzadeh H, Shirzad F. Determination of antioxidant activity, phenolic contents and antiviral potential of methanol extract of *Euphorbia spinidens* Bornm (Euphorbiaceae). *Trop J Pharm Res.* 2016; 15(4): 759-64.
- [30] Lorke D. A new approach to practical acute toxicity testing. *Arch. Toxicol.* 1983; 54(4): 275-87.
- [31] Hsu, YW, Tsai ChF, Chen WK, Huang ChF, Yen ChCh. A subacute toxicity evaluation of green tea (*Camellia sinensis*) extract in mice. *Food Chem Toxicol.* 2011; 49(10): 2624-30.
- [32] Zahra T, Butt SA, Ali MH, Mubarak A, Shahid J. Role of beta carotenon on histomorphology of rat kidneys in subcutaneous induced renal damage. *PAF Med J.* 2014; 64(3): 473-8.
- [33] Schmidt L, Sheila A, Linda A, Jane R. Comparison of the curative antimalarial activities and toxicities of primaquine and its d and l isomers. *Antimicrob Agents Chemother.* 1977; 12(1): 51-60.
- [34] Jothy SL, Zakaria Z, Chen Y, Lau YL, Latha LY, Sasidharan S. Acute oral toxicity of methanolic seed extract of *Cassia fistula* in mice. *Molecules.* 2011; 16(6): 5268-82.
- [35] Karimi G, Tayebi N, Housainzadeh H, Shirzad F. The study of Subacute toxicity of aqueous extract Stalk and petals of Saffron (*Crocus sativus* L). *Korean J Parasitol.* 2004; 3(12): 29-35.
- [36] Lagouri V, Boskou D. Nutrient antioxidants in oregano. *Int J Food Sci Nutr.* 1996; 47(6): 493-7.
- [37] Shimoji Y, Tamura Y, Nakamura Y, Nanda K, Nishidai Sh, Nishikawa Y, et al. Isolation and identification of DPPH radical scavenging compounds in Kurosu (Japanese unpolished rice vinegar). *J Agric Food Chem.* 2002; 50(22): 6501-3.
- [38] Mirzaei A, Akbartabar M, Sadeghi H, Sharifi B. The Antioxidant Activities and Total Phenolic of *Artemisia Martima*, *Achillea Millefolium* and *Matricaria Recutita*. *Armaghane danesh.* 2010; 15(3): 243-52.
- [39] Tupe R, Kemse N, Khaire A. Evaluation of antioxidant potentials and total phenolic contents of selected Indian herbs powder extracts. *Int Food Res J.* 2013; 20(3): 1053-63.
- [40] Rafeian-Kopaei M and Baradaran A. Oxidative stress and the paradoxical effects of antioxidants. *J Res Med Sci.* 2013; 18(7): 628.